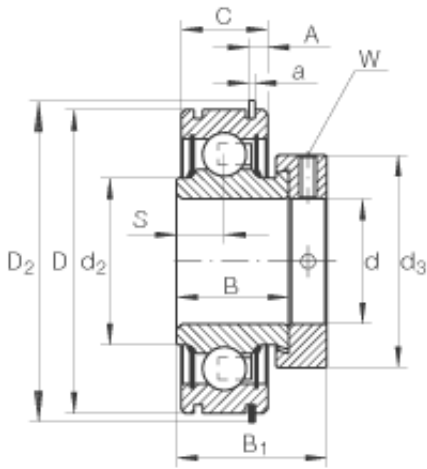




RAD Power Machinery Co., Ltd.



RAE35-NPP-NR Bearing 2D drawings and 3D CAD models

INA RAE35-NPP-NR deep groove ball bearings

Bearing No. RAE35-NPP-NR

Size	35x72x39 mm
Bore Diameter	35 mm
Outer Diameter	72 mm
Width	39 mm
d	35 mm
D	72 mm
B ₁	39 mm
A - 4,98 mm / Tolerance: -0,3	4,98 mm / Tolerance: 0,3
a	1,7 mm
B	25,4 mm
C	19 mm
D ₂	78,6 mm
d ₂	44,6 mm
d _{3 max}	51 mm
S	9,5 mm
W	5 mm
m	0,48 kg / Weight
C _r	27500 N / Dynamic load rating (radial)
C _{0r}	15300 N / Static load rating (radial)
Category	Insert Bearings Cylindrical OD
Inventory	0.0
Manufacturer Name	SCHAEFFLER GROUP
Minimum Buy Quantity	N/A



RAD Power Machinery Co., Ltd.

UNSPSC	31171536
Weight / Kilogram	0.575
EAN	4012802820812
Product Group	M06110
Inner Race Profile	Narrow Inner Ring
Outer Race Profile	Cylindrical
Mounting Method	Eccentric Collar
Rolling Element	Ball Bearing
Relubricatable	No
Seal Type	Double Lip Contact
Snap Ring	Yes
Inch - Metric	Metric
Long Description	35MM Bore; Narrow Inner Ring; 19MM Outer Race Width; 72MM Outside Diameter; Eccentric Collar; Ball Bearing; 39MM Length Thru Bore; Not Relubricatable; Double Lip Contact Seal; Yes Snap Ring
Other Features	Single Row Metric
Outer Race Width	0.748 Inch 19 Millimeter
Outside Diameter	2.835 Inch 72 Millimeter
Bore	1.378 Inch 35 Millimeter
Length Thru Bore	1.535 Inch 39 Millimeter